

ARB GUIDE TO UPDATE THE LTP TAXONOMY – LTP TEAM 21.07.22

This is a guide to update the LTP taxonomy of databases downloaded before July 2022 using ARB.

1/ Download the latest LTP release in csv format from <https://imedea.uib-csic.es/mmg/ltp/>

This file is organized as follows:

Column	Field	Definition
1	acc	Accession number
2	fullname_ltp	Species names (checked against LPSN)
3	tax_ltp	Taxonomic hierarchy (checked against LPSN)
4	tax_status_ltp	Taxonomic status of the fullname_ltp entry
5	type_ltp	Type species giving the name to the genus
6	sp_name_LPSN	Correct species name according to LPSN
7	tax_LPSN	Taxonomic hierarchy according to LPSN

2/ Open your database with ARB and go to *File* → *Import* → *Import fields from calc-sheet*

The following window will pop up and must be completed as follows to update the LTP Taxonomy field (tax_ltp)

The screenshot shows the 'Import fields from calc-sheet' dialog box in ARB. The window title is 'GDE / Import / Import fields from calc-sheet (on mmg4)'. The dialog has buttons for 'CLOSE', 'GO', and 'HELP'. The settings are as follows:

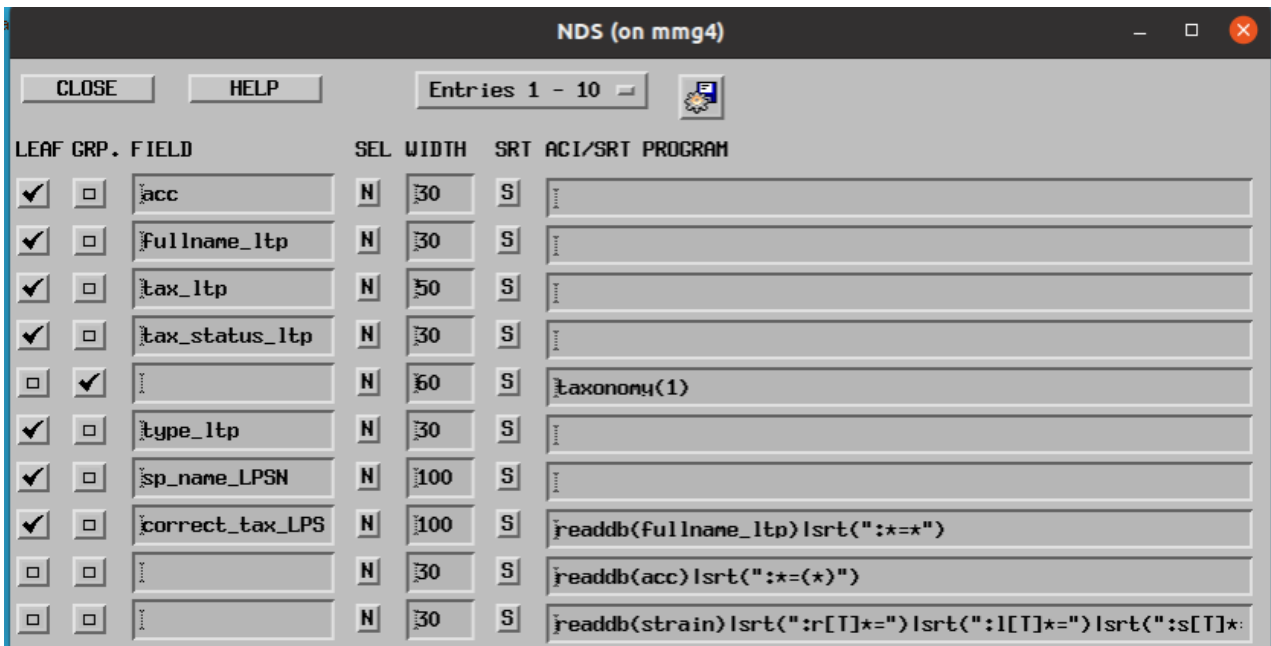
- Import from CSV: /hone/asuarez/Escritorio/RELEASE_LTP_12_ (with a 'Browse' button)
- Write content of column: 3 (with '-' and '+' buttons)
- to field: tax_ltp
- of species for which field matches content of column: acc (with a 'Browse' button)
- Columns are separated by: tabs (with a dropdown arrow)
- Overwrite existing fields: no yes
- Unmatched entries will: be skipped (with a dropdown arrow)
- Import to: all species (with a dropdown arrow)
- Mark: species when writing field (unmark rest) (with a dropdown arrow)
- Field type: Text (with a dropdown arrow)

Follow the same steps to update all the LTP fields listed in the table as the information may have been also updated.

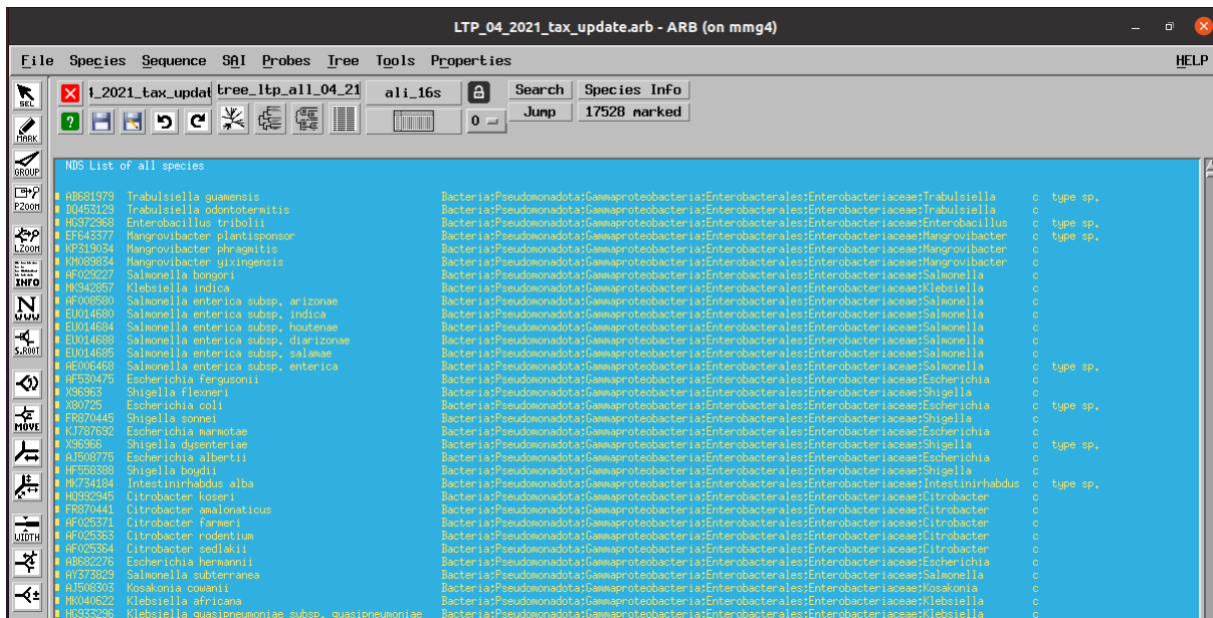


ARB GUIDE TO UPDATE THE LTP TAXONOMY – LTP TEAM 21.07.22

3/ Check that the changes have been updated. Go to *Tree* → *NDS (Node Display setup)*



When the marked species are now listed in the main ARB window it will look like the picture below:



4/ Do not forget to save your database at *File* → *Save whole database as...*

If you have any questions or doubts, please do not hesitate contacting with the LTP team at ltl@imedea.uib-csic.es

